

## HOW DO THE COMPETITIONS WORK?

This section of the show continues to go from strength to strength and is a popular attraction for our visitors. We see new exhibitors each year and we are keen to get as many first time entrants too. Our take on it is if you enjoy your garden, others will too, so why not give it a go? There are prizes in each of the classes and this year we have included our amateur photography competition, children's design a garden competition and information on how to get involved in our community and schools garden competition. There are five different sections:

**FLOWER, FRUIT AND VEGETABLE CLASSES:** The Chorley & District Gardening Society provide their expertise to organise this popular competition. We have 69 classes in total this year, including the fruit and vegetable classes and children's classes to inspire the next generation of budding gardeners.

**BEGONIA:** Back again for 2026 the National Begonia Society are helping us to host our Begonia competition to provide more floral delights and vibrant colour to the show.

**FLORAL ART:** If you are creative and enjoy working with flowers, our floral art competition is right up your street! With new classes for 2026, plus a children's class, there really is something for everyone!

**PHOTOGRAPHY COMPETITION:** Launched during our virtual show in 2020, the photography competition has proved popular with snappers and has provided some striking images for the show.

**CHILDREN'S DESIGN A GARDEN COMPETITION:** This competition returns for 2026 to provide an opportunity for the next generation of garden designers as they see their ideas brought to life at the Chorley Flower Show.

**COMMUNITY AND SCHOOL GARDEN COMPETITION:** These popular 2x2 metre gardens are always a real hit with visitors to the show and provide an opportunity for charities, community groups and schools to interact with our show visitors.

### All entries to:

To enter our Floral Art, Flower Fruit & Veg and Community Garden competitions: Visit our website at [chorleyflowershow.com/competitions](http://chorleyflowershow.com/competitions) where you will find our application forms online.

For entries for the Children's Design a Garden and Photography competitions: Email [competitions@chorley.gov.uk](mailto:competitions@chorley.gov.uk) or deliver to Chorley Council, Town Hall, Market Street, Chorley, PR7 1DP

### Deadline for entries:

Flower, Fruit and Vegetable and Begonia classes is Thursday 23 July

Floral Art Competition is Tuesday 30 June

Photography Competition is Sunday 21 June

Children's Design a Garden Competition is Friday 24 April

Community and Schools Garden Competition is Tuesday 30 June

If you need any advice with your application, email [competitions@chorley.gov.uk](mailto:competitions@chorley.gov.uk) or call 01257 515151.

# FLOWER, FRUIT AND VEGETABLE CLASSES

NEW CLASSES

Prize money for all classes will be as follows:

**First: £7.50    Second: £5    Third: £2.50**

## CLASS

1	Dahlia - Cactus or Semi-Cactus	1 vase, any size, 3 blooms, one variety
2	Dahlia - Cactus or Semi-Cactus	1 vase, any size, 1 bloom
3	Dahlia - Decorative	1 vase, any size, 3 blooms, one variety
4	Dahlia - Ball	1 vase, any size, 3 blooms, one variety
5	Dahlia - Pompom	1 vase, 3 blooms, one variety
6	Dahlia - Collerette	1 vase, 3 blooms, one variety
7	Dahlia - Waterlily	1 vase, 3 blooms, one variety
8	Dahlia - Decorative or Ball	1 vase, 1 bloom
9	Roses - Floribunda	1 vase, 3 stems, one variety
10	Roses - Mixed Vase	1 vase, 4 stems, two or more varieties
11	Rose - Specimen bloom	1 vase, 1 single bloom
12	Pinks	1 vase, 3 stems, one or more varieties
13	Sweet Peas	1 bowl (max 10cm dia.), mixed of any kind
14	Sweet Peas	1 vase, 7 stems, any variety
15	Pansies or Violas	5 blooms, any variety, in a small vase
16	Mixed garden flowers	1 vase, max 8 stems (Excluding classes 1-11)
17	Annuals	1 vase, 5 stems, one variety
18	Annuals	1 vase, 5 stems, 3 or more varieties
19	Perennials	1 vase, 3 stems, one or more varieties (Excluding classes 1 – 11)
20	Gladiolus	1 vase, 1 spike, any variety
21	Gladiolus	1 vase, 3 spikes, any variety or varieties
22	Pelargonium or Geranium	1 plant in flower, max 23cm pot
23	Zonal Geranium	1 cut bloom in a vase with two own leaves
24	Fuchsia	1 plant, pot size up to 13cm
25	Fuchsia	1 plant, pot size over 13cm up to 23cm
26	Fuchsia stems	1 vase, 3 stems, any variety
27	Pot plant in flower	1 plant, max 23cm pot – excluding Fuchsia, Pelargonium/Geranium, Begonia
28	Orchid in Flower	1 plant any variety, max 15cm pot
29	Indoor foliage pot plant	1 plant, max 23cm pot – excluding Fern, Begonia
30	Fern	1 plant, max 30cm pot
31	Hosta	1 plant, max 23cm pot
32	Cactus (clustering/multi-headed)	1 plant, up to 13cm dia. pot
33	Cactus (solitary or clustering)	1 plant, over 13cm dia. pot
34	Succulent (miniature/small growing)	1 plant, up to 13cm dia. pot
35	Succulent (Aeonium/Agave, etc.)	1 plant, over 13 cm dia. pot
36	Echeveria	1 plant, up to 10cm dia. pot
37	Sempervivums	1 container, up to 30cm dia
38	Patio container	Max 40cm diameter or 40cm square container planted with single or variety of plants
39	Mixed Class	1 vase, max. 5 stems, one or more varieties and 1 plate of vegetables
40	Bunch of herbs	4 varieties, to be displayed in a glass jar/vase (see rule 7)
41	Tomatoes	4, with calyx, to be displayed on a plate
42	Tomatoes	4, small fruited or cherry with calyx

43	Cucumber	2, one variety
44	Potatoes - white	4, one variety
45	Potatoes - coloured	4, one variety
46	Potatoes mixed	4, 2 white and 2 coloured
47	Onions	3, one variety, not to exceed 250gm each
48	Onions	3, one variety, exceeding 250gm each
49	Beetroot	3, any variety, with 75mm tops
50	Broadbeans	4, with stalks
51	Runner beans	4, with stalks
52	French beans	4, with stalks
53	Carrots - stump rooted	3, with 75mm tops
54	Courgette	2, one variety, 100-150mm long, with flowers attached
55	Chilli pepper	2, one variety
56	Peas	4, with stalks
57	Shallots	6, to be shown on a plate, one variety
58	Shallots - pickling	10, not to exceed 30mm, to be shown on a plate, one variety
59	Gooseberries	1 variety, not less than 10, dish or plate, with stalks/strigs attached
60	Currants	1 variety, 5 strigs
61	Any other soft fruit (excluding classes 59 & 60)	1 variety, not less than 10, dish or plate, with stalks/strigs attached

### NOVICE Classes (see show rule 9)

62	Mixed garden flowers	1 vase, 5 stems
63	Pot plant in flower	1 plant, max 23cm pot

### CHILDREN Classes

#### 7 YEARS AND UNDER

64	Drawing or Painting of your Favourite Animal	Max A4 size
65	Bowl of Floating Flower Heads	Bowl not to exceed 30 cm

#### 8 TO 11 YEARS

66	I grew this from Seed in 2026	Does not have to be in flower
67	Vase of Mixed Flowers	To be judged from all sides

#### 12 TO 16 YEARS

68	Photo of Flowers in Chorley	Not to exceed 7in x 5in, no border, taken in 2026
69	Anything you like	You make it, let us see it! max size 30cm x 30cm

**TIPS FOR EXHIBITORS** - To get you started we've included some tips to help you have the best chance of succeeding, particularly if you've never entered a show before:

- Plants used in the display must be showing flowers only; no seed heads or berries are allowed. Foliage which is growing naturally from the flowering stem, and still attached to that stem, will be allowed. No additional foliage should be included, except class 12 (dianthus foliage only).
- Packing materials – in line with RHS guidance, floral foam (Oasis) will not be permitted.** Alternatives can include chicken wire, flower frogs, gravel, rocks, pebbles, willow, rattan or pliable reeds, wood wool, straw or recyclable floral clay.
- In all classes where a vase is referred to it must be taller in height than it is wide at the mouth.
- For flower class 16 (one vase of mixed flowers) – a vase of mixed flowers should contain eight stems taken from a minimum of two different kinds of plants. This means two different kinds of plants; two different varieties of the same flower are not two different kinds. Only fresh home grown flowers can be used in the vase.
- Tomato classes - sand will not be permitted for display.

# BEGONIA COMPETITION

## Begonia classes

After the successful introduction of the Begonia competition for the 2021 show, the National Begonia Society will again be holding this competition at the Chorley Flower Show in 2026. The competition is open to everyone to enter whether you are a member or not and we would love to see plenty of entrants giving it a go and taking part.

### CLASSES

- |  |                           |
|--|---------------------------|
| 1. <b>Three pots of tuberous double begonia</b>                    | 1st £25, 2nd £15, 3rd £10 |
| 2. <b>One pot of tuberous double begonia</b>                       | 1st £10, 2nd £6, 3rd £3   |
| 3. <b>One pot of rhizomatous/rex or cane begonia</b>               | 1st £10, 2nd £5, 3rd £3   |
| 4. <b>Three pots of one pot of rhizomatous/rex or cane begonia</b> | 1st £25, 2nd £10, 3rd £5  |
| 5. <b>One pot of begonia, not mentioned above</b>                  | 1st £10, 2nd £5, 3rd £3   |
| 6. <b>Three cut blooms</b>   | 1st £10, 2nd £5, 3rd £3   |
| 7. <b>One cut bloom</b>  | 1st £8, 2nd £4, 3rd £2    |

**Packing materials – in line with RHS guidance, floral foam (Oasis) will not be permitted.** Alternatives can include chicken wire, flower frogs, gravel, rocks, pebbles, willow, rattan or pliable reeds, wood wool, straw or recyclable floral clay.

Bloom boards will be provided.

Deadline for entries is **Thursday 23 July at 5pm.**

If you'd like to know more about exhibiting in the begonia competition you can contact Terry Tasker at the National Begonia Society on 01704 213048, visit [www.national-begonia-society.co.uk](http://www.national-begonia-society.co.uk) or search them on Facebook.

# FLORAL ART CLASSES

## Open Classes

Formally flowers – for those who like to be challenged. These 4 classes will be judged against NAFAS Rules (Blue book 2023.)

### 1. Red Carpet Ready

A free standing exhibit created on or incorporating a black metal filigree half mannequin frame (provided). Space allowed: 120cm x 120cm x 220cm high on a base painted matt black with a red carpet overlay; raised 10-15cm from the floor (provided). Viewed from front and sides. 1st £50; 2nd £30 and 3rd £20. Max number of entries accepted for this class – 5

### 2. Foliage in Focus

A foliage exhibit, seed heads and berries may be included. To be displayed on a freestanding 'box' with back panel measuring 75cm wide x 73cm deep x 98cm high, raised approx. 90cm from the floor and painted Johnstone's 'Twinkle Blue'. Viewed from front and sides. 1st £25; 2nd £15 and 3rd £10. Max number of entries accepted for this class – 6

### 3. Looking Forward

An opportunity but not a requirement, to create a contemporary floral exhibit. The exhibit to use just 5 flowers of the same variety and of one colour. Foliage of your choosing is allowed. Space allowed – freestanding box with back panel 75cm wide x 73cm deep x 98cm high, with a back panel, raised approx. 90cm from the floor and painted Johnstone's 'Twinkle Blue'. Viewed from front and sides. 1st £25; 2nd £15 and 3rd £10. Max number of entries accepted for this class – 6

New this year ... An 'intermediate' class to encourage the less experienced; those who haven't entered a show before or those who have entered previously but not won a 1st or 2nd prize.

### 4. From the Kitchen

A floral exhibit incorporating item(s) to interpret the title. The exhibit must include at least 1 item from the kitchen. To be displayed on a freestanding 'box' with back panel measuring 75cm wide x 73cm deep

x 98cm high, raised approx. 90cm from the floor and painted Johnstone's 'Innuendo'. Viewed from front and sides. 1st £25; 2nd £15 and 3rd £10. Max number of entries accepted for this class – 6

Fun-Flowers Classes – 2 classes to tempt. The 'blue book' 2023 should be used for guidance, but these classes are not being judged against NAFAS rules; Judges will be looking for creativity and 'wow' factor demonstrated through the finished work.

### 5. Door Décor - Sponsored by: Ince Williamson, Estate Agents, Chorley

A door 'wreath' or 'hanging' reflecting your creativity and use of colour. You will display your creation on a solid door painted in Johnstone's 'Innuendo' ('standard' size external type door is provided; No additional/floor placements are allowed. If desired, a matt black coloured 'wreath hanger' providing a single mounting point for your work can be provided to place over the top edge of the door for securing your wreath.) Pre-prepared basic background work is allowed but the design must be created & finished off on site. Viewed from front as seen on a door. 1st £25; 2nd £15 and 3rd £10. Max number of entries accepted for this class – 9

### 6. A night at the Oscars - Sponsored by: Hat Hire and Accessories by Neve

Using a pre-loved hat/hatinator as your starting point, create an item of headgear that would 'wow' at the Oscars. It will be displayed on a black foam head (provided) which positioned on an individual black plinth (a round table approx. 50cm diameter and 100cm tall) will be viewed from all around for judging. Entries for this class can be pre-prepared leaving only minor 'finishing off' to be done on site. A limited number of hats are available to collect for 'free' from Chorley Town Hall. (Please see additional guidance notes). The winner in this class will receive a voucher\*\* to the value of £40 for the hire of an occasion hat, hatinator or fascinator from 'Hat Hire & Accessories by Neve'. Max number of entries accepted for this class – 10

# FLORAL ART CLASSES

## Children's and Young Persons Class

An opportunity for those aged 16 and younger to showcase their creativity. All entrants will get a voucher for a free ice cream at the show. Additionally up to 4 prizes will be awarded.

### 7. **Movie Magic - Sponsored by: Reel Cinema Chorley**

Create a 'picture' with 'wow' factor that showcases a favourite movie. You must include flowers and foliage as part of your design and remember to include the movie title! You will have a space, a niche measuring approximately 60cm wide x 45cm tall and 20cm deep (Approx A2 size) in which to display your work. It will be painted satin black. All the available space/surfaces can be used if you wish. Also, using no more than 100 words you need to write an explanation of your design and what inspired you to create it. (This should be on white paper/card measuring 20cmx15cm -A5- in landscape format). Pre-prepared basic background work, can be done at home, (you can make things in advance) but the design itself must be created & finished off on site. Finished creations will be linked together to resemble film slides and will be viewed from the front. Up to 4 prizes, each comprising a pair of free cinema tickets to a movie of your choice at Reel Cinema Chorley during August, September, October 2026. All 8 entrants will receive a voucher to exchange for a free ice cream at the show (these will be distributed during staging of your work on Thursday). Number of entries accepted for this class – 8

## Peoples Choice Award

In addition to the prizes listed, there will be a Peoples Choice Award. All visitors to the show will be able to vote for their preferred Floral Art exhibit from any of classes 1-7.

**This is sponsored by Marshalls Florists, Chorley.**  
The winning exhibit will receive a prize.

### Additional notes:

#### Class 6 **A night at the Oscars**

Entries can comprise either fresh or dried flowers/ foliage; artificial flowers/foliage is not allowed.

\*Pre-loved hat or hatinator can be purchased from a charity shop or a few are available from Chorley Town Hall; contact Danielle Sheldon on 07890439584.

Exhibit to be staged on a black foam head/hat stand which is provided. This will be secured on a black plinth, approx. 35cm diameter and raised approx. 100cm from the ground, It will be positioned along with other entries in this class.

\*\*Voucher to the value of £40 for the hire of an occasion hat, hatinator or fascinator from 'Hat Hire & Accessories by Neve'. Voucher is valid for 12months from date of show. A refundable deposit would be required along with the presentation of the hire voucher.  
[www.hatsbyneve.co.uk](http://www.hatsbyneve.co.uk)

**Oasis (floral foam) is permitted, but we ask entrants to consider the environment when displaying their floral arrangements and we encourage the use of environmentally friendly alternatives where possible.**

Deadline for entries is Tuesday 30 June at midnight.

If you'd like to know more about exhibiting in the floral art section, or you have any questions, please contact Janet Brimley 07768 591649.

See floral art show rules of these classes.

# PHOTOGRAPHY COMPETITION

## Categories

### Check Out Chorley

Celebrate why Chorley has the best of Lancashire all in one place.

### Seasonal Colours

Capture the colours of nature.

### Creepie Crawlies

Celebrate nature's smallest creatures.

### Interesting Architecture

Discover and Showcase beautiful buildings and ornate features.

### Urban Nature

Capturing mother nature in unlikely places.

### Young Photographer Category:

#### Nature at home

Explore and snap your world around you.

### Eligibility:

This competition is for people of all ages. The main categories are for adults aged 16 and over and the young photographer category is for anyone aged under 16 on the date the competition closes.

### Judging:

The winner will be voted for by the public at Chorley Flower Show 2026 from three shortlisted images which will be displayed at the show.

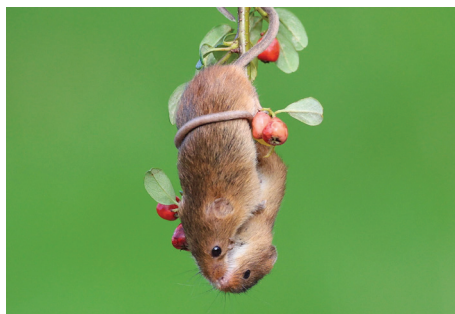
### Winners:

Winners of each category will win a wristband for the 2027 Chorley Flower Show, the young photographer winner will win a prize. The photographs will be used to publicise next year's show and will feature at the show to be seen by thousands of people.

### Criteria:

- All photographs must be a high quality digital image received in JPEG format
- All photographs must be minimally modified. We are seeking natural photographs, free from digital manipulation. Subtle sharpening and colour balance will be regarded as normal digital processes.
- Entrants to the young photographer category must be aged 16 or below on the date the photograph was taken.
- Entries should be sent via WeTransfer to [competitions@chorley.gov.uk](mailto:competitions@chorley.gov.uk) with the following information provided in the message field.
  - Category
  - Name of photographer
  - Contact email address
  - Contact phone number
  - Name of photograph
  - Location photograph was taken
  - Age of photographer. (For young photographer category entries only)

Entries must be received by **midnight on Sunday 21 June 2026.**



Paul Gray - Holding on for a Cuddle  
Winner of 2025 photography competition  
Treasure of nature category

# CHILDREN'S DESIGN A GARDEN COMPETITION

Imagine your garden design brought to life this summer at Chorley Flower Show! Last year, our competition winner Mia, submitted an incredible wizardry inspired design which was transformed by our team of expert designers into a show garden. This year it could be your design.

The winning entrant and their family will also win four weekend wristbands to the show as well as £100 of gardening vouchers for their school!

**This competition is open to children between ages 5 and 11.**

**To enter, download an entry template from [www.chorleyflowershow.com](http://www.chorleyflowershow.com) or send in a design on A4 paper with the following:**

- Your design for a 6m x 6m show garden set against your own brief. Please also:
  - o Describe your garden
  - o Tell us what the garden is used for
  - o Label the main plants and features

You can theme your garden on any ideas and you can be as creative as you like!

Our panel of experts will judge the garden designs and consider how realistic the garden is to recreate.

Entries can be submitted to [competitions@chorley.gov.uk](mailto:competitions@chorley.gov.uk) or by posting to Children's Design a Garden Competition, Chorley Flower Show, Chorley Town Hall, Market Street, Chorley, PR7 1DP

When entering, please include your name, your design, your brief, contact details, age and the school you attend

Deadline for entries is **Friday 24 April at midnight.**



# COMMUNITY AND SCHOOL GARDEN COMPETITION

For the fastest way to enter our competitions visit our website at [chorleyflowershow.com/competitions](http://chorleyflowershow.com/competitions) where you will find our application forms online.

Our popular Community and School Garden Competition returns to the show for 2026. If you are part of a community group or perhaps you work at a school that would like to take part, please email us at [competitions@chorley.gov.uk](mailto:competitions@chorley.gov.uk) to get involved.

These popular 2m x 2m gardens are a real hit with visitors to the show and provide a great opportunity to talk to visitors about your community group, charity or school. Schools/ Community groups will receive a 2.4m x 1.2m (approximately) MDF backboard at the beginning of June (these can be requested earlier if needed).

- Schools/Groups will have a 2m x 2m edged area to plant
- Schools/Groups will have access to Astley Park from Tuesday 28 July from 5pm to plant their garden
- The garden area will be fenced off to protect it from visitors in the park
- Your garden will need to be completed by Thursday 30 July
- You will need to provide a brief description for the garden
- The competition will be judged against the criteria on Friday 31 July (Once show opens)
- Chorley Council will provide the garden sleepers, soil and backboard. Schools/Groups will provide all plants and garden materials
- Prizes given are gold, silver gilt and silver and best in show
- Schools/Groups can remove and reuse their garden after the show finishes

## Theme:

We are asking everyone who takes part in the Community Garden Competition to choose a Blockbuster Film to theme their garden on. Please let us know which film you will be choosing on your application form.

Deadline for entries is **Tuesday 30 June at midnight.**



# SHOW RULES

## Flower, fruit and vegetable classes and Begonia Competition



1. The show is open to individual amateur growers only.
2. Maximum of two entries per class per exhibitor (use one entry form per person).
3. **Packing materials - in line with RHS guidance, floral foam (Oasis) will not be permitted.** Alternatives can include chicken wire, flower frogs, gravel, rocks, pebbles, willow, rattan or pliable reeds, wood wool, straw or recyclable floral clay. For Tomato classes - sand will not be permitted for display.
4. Exhibitors will receive staging tickets for each entry and these are to be placed face down before judging commences with only the class number showing. Any exhibit failing to display a staging ticket may be excluded from the competition.
5. All exhibits entered into the competition must have been grown by the exhibitor and have been in their possession for at least eight weeks prior to the show.
6. Exhibits in the children's classes must be the unaided work of the exhibitor.
7. Exhibits to be staged (displayed) in appropriate vase, plate or dish. The use of bottles and jam jars is prohibited, except class 40, where jam jars can be used. Show vases should not display any visible name of an individual or society. Show vases should be used where possible and a **limited amount** will be available from Chorley & District Gardening Society at the show.
8. Exhibitors are asked to name their exhibits to help the public enjoy the show.
9. Exhibitors are not allowed to accompany judges during their appraisal. Stewards who are not exhibitors will be appointed by the council. Only officials with special duties will be present when judging is in progress.
10. Judges shall be empowered to withhold or reduce prizes and awards where, in their opinion, exhibits are deficient in merit.
11. While every reasonable precaution is taken to safeguard exhibits and vases, the council cannot be held responsible for any loss or damage.
12. No exhibit to be removed before 5pm on Sunday 2 August. Exhibits not collected by 7pm, will be recycled.
13. The judges' decision is final.
14. Any exhibitor wishing to make an objection must submit it to the Show Manager before 12noon on Friday 31 July. The decision of the show manager is final, empowered by the council.
15. The council is empowered, without any explanation being given to:
  - a. Refuse any entry and settle any disputes
  - b. Withhold any prize in any class
  - c. Settle any matter not provided for in these rules
16. Staging this year is from 4.30pm to 9.30pm on Thursday 30 July and from 7am until 8.30am on the Friday of the show when the marquee will be cleared for judging. Times are subject to change.
17. Prize monies must be collected between 2pm to 4pm on Friday, Saturday or Sunday - if not, the money will be forfeited at the show.
18. Show rule - Novice classes are for exhibitors who have not won a First Prize in a Novice or Open class for that type of exhibit.
19. **A minimum of three entries (at least one entry in three separate classes) must be submitted. Entry fee is £5, which will get you a wristband for the day of your choice. Any additional wristbands will require purchasing at the normal rate.**

# SHOW RULES

## Floral art competition

1. Each exhibitor is allowed a maximum of two entries, but only one entry per class.
2. Classes 1-3 (Open Classes) Class 4 (Intermediate Class) will be judged in accordance with NAFAS competitions manual (blue book 2023 fourth edition) available from NAFAS Enterprise Limited. It is strongly recommended that all competitors staging flower exhibits refer to this manual.
3. No artificial plant material is allowed.
4. Oasis (floral foam) is permitted, but we urge entrants to consider the environment when displaying their floral exhibits and we encourage the use of environmentally friendly alternatives where possible.
5. Exhibitors will receive staging tickets for each entry and these are to be placed face down before judging commences with only the class number showing. Any exhibit failing to display a staging ticket may be excluded from the competition. Judges' comment cards must be left on exhibits until the close of the show.
6. Exhibits must be created in situ at the showground during the staging process. Unless stated otherwise, exhibits cannot be made at home and then brought onto the showground.
7. Exhibits in the children's class must be the unaided work of the exhibitor.
8. Exhibitors are not allowed to accompany judges during their appraisal. Stewards who are not exhibitors will be appointed by the council. Only officials with special duties will be present when judging is in progress.
9. Judges shall be empowered to withhold or reduce prizes and awards where, in their opinion, exhibits are deficient in merit.
10. While every reasonable precaution is taken to safeguard exhibits, the council cannot be held responsible for any loss or damage.
11. No exhibit to be removed before 5pm on Sunday 2 August. Exhibits not collected by 5pm on Monday 3 August will be recycled.
12. The judges' decision is final.
13. Any exhibitor wishing to make an objection must submit it to the Show Manager before 12noon on Sunday 2 August. The decision of the show manager is final, empowered by the council.
14. The council is empowered, without any explanation being given to:
  - a. Refuse any entry and settle any disputes
  - b. Withhold any prize in any class
  - c. Settle any matter not provided for in these rules
15. Staging this year is from 8am to 8pm on Thursday 30 July. There will be no staging on the Friday morning. Times are subject to change.
16. Prize monies must be collected between 2pm to 4pm on Friday, Saturday or Sunday - if not the money will be forfeited.
17. Entry fee is £5, which will get you a wristband for the day of your choice. Any additional wristbands will require purchasing at the normal rate.